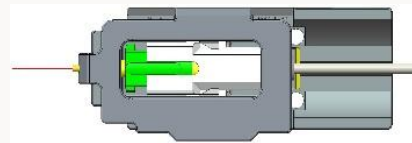
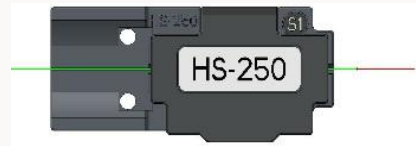


Custom Lengths.
Simple&Fast Deployment.
Cost&Inventory Effective.



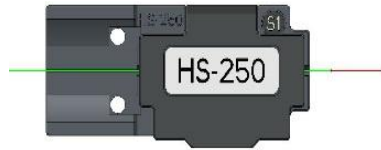
Fiber Holder Selection Guides

Patented



The Next Technology for Fiber to the Home

HS-250 Holder



Coating Diameter or Cable Type

Ø250µm Coating

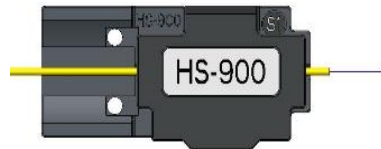
Splicer Models

K33, K33A, K11, KF4, KF4A, KF4A_HDC

Setting

1 Pair(Left & Right)

HS-900 Holder



Coating Diameter or Cable Type

Tight Buffer Ø900µm Coating

Splicer Models

K33, K33A, K11, KF4, KF4A, KF4A_HDC

Setting

1 Pair(Left & Right)

HS-2.5F Holder



Coating Diameter or Cable Type

Ø3mm Cable with Tight Buffer Ø900µm Coating

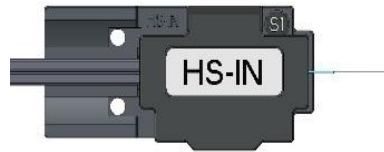
Splicer Models

K33, K33A, K11, KF4, KF4A, KF4A_HDC

Setting

1 Pair(Left & Right)

HS-IN Holder



Coating Diameter or Cable Type

3x2mm Flat Drop Cable with $\text{\O}250\mu\text{m}$

Coating

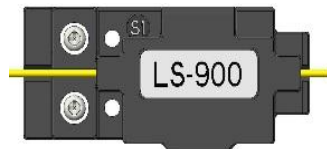
Setting

1 Pair(Left & Right)

Splicer Models

K33, K33A, K11, KF4, KF4A, KF4A_HDC

LS-900(Loose) Holder



Coating Diameter or Cable Type

Loose Buffer $\text{\O}900\mu\text{m}$ with $\text{\O}250\mu\text{m}$

Coating

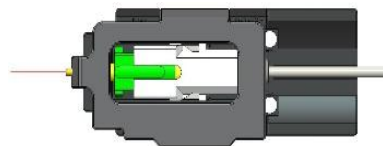
Setting

Left Only

Splicer Models

K33, K33A, K11, KF4, KF4A, KF4A_HDC

HS-SC/FC Holder



Coating Diameter or Cable Type

F-SOC SC/FC Pre-cleaved (UCL Swift)

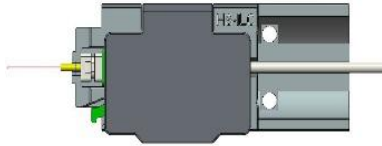
Setting

Right Only

Splicer Models

K33, K33A, K11

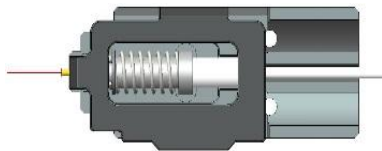
HS-ILC Holder



Coating Diameter or Cable Type **Splicer Models**
F-SOC LC Pre-cleaved (UCL Swift) K33, K33A, K11

Setting
Right Only

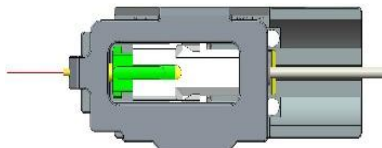
HS-ST(_new) Holder



Coating Diameter or Cable Type **Splicer Models**
F-SOC ST Pre-cleaved (UCL Swift) K33, K33A, K11

Setting
Right Only

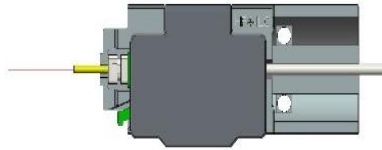
HF4-SC/FC Holder



Coating Diameter or Cable Type **Splicer Models**
F-SOC SC/FC Pre-cleaved (UCL Swift) KF4, KF4A, KF4A_HDC

Setting
Right Only

HF4-ILC Holder



Coating Diameter or Cable Type

F-SOC LC Pre-cleaved (UCL Swift)

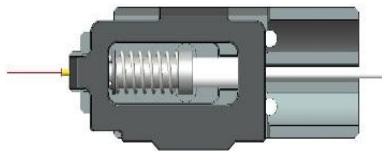
Splicer Models

KF4, KF4A, KF4A_HDC

Setting

Right Only

HS-ST(_new) Holder



Coating Diameter or Cable Type

F-SOC ST Pre-cleaved (UCL Swift)

Splicer Models

KF4, KF4A, KF4A_HDC

Setting

Right Only

580-900 Holder



Coating Diameter or Cable Type

Outdoor Round Cable
Ø5.8 mm / Tight Buffer Ø900µm Coating

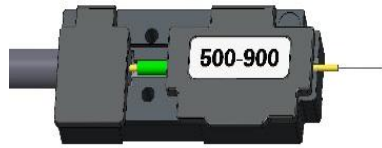
Splicer Models

KF4A_HDC, K33A_HDC

Setting

Left Only

500-900 Holder



Coating Diameter or Cable Type

Outdoor Round Cable
Ø5.0 mm / Tight Buffer Ø900µm Coating

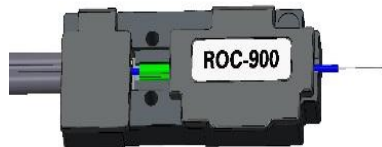
Splicer Models

KF4A_HDC, K33A_HDC

Setting

Left Only

ROC-900 Holder



Coating Diameter or Cable Type

ROC Drop Dielectric Cable 5.4x3.0 mm
/ Tight Buffer Ø900µm Coating

Splicer Models

KF4A_HDC, K33A_HDC

Setting

Left Only

SST-900L Holder



Coating Diameter or Cable Type

Corning SST-Drop Outdoor Dielectric Cable
8.1x4.5 mm/Tight Buffer Ø900µm Coating

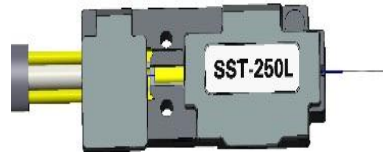
Splicer Models

KF4A_HDC, K33A_HDC

Setting

Left Only

SST-250L Holder



Coating Diameter or Cable Type

Corning SST-Drop Outdoor Dielectric
Cable 8.1x4.5 mm / with $\text{\O}250\mu\text{m}$ Coating

Splicer Models

KF4A_HDC, K33A_HDC

Setting

Left Only

610-900 Holder



Coating Diameter or Cable Type

ACOME H0122D Optical Drop Cable $\text{\O}6.1\text{mm}$
 $\text{\O}6.1\text{ mm}$ / Tight Buffer $\text{\O}900\mu\text{m}$ Coating

Splicer Models

KF4A_HDC, K33A_HDC

Setting

Left Only

5020-250 Holder



Coating Diameter or Cable Type

Flat 5.0x2.0mm (2.0x3.0mm) Mexico, Furukawa

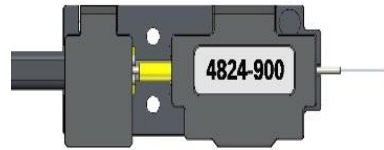
Splicer Models

KF4A_HDC, K33A_HDC

Setting

Left Only

4824-900 Holder



Coating Diameter or Cable Type

4824 DROP CABLE (4.8mm x 2.4mm)

Swift

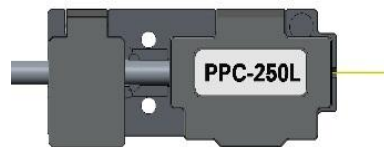
Setting

Left Only

Splicer Models

KF4A_HDC, K33A_HDC

PPC-250L Holder



Coating Diameter or Cable Type

Miniflex_standard_cable_ppc

O.D. Ø3.0 mm / Coated Dim. Ø250µm

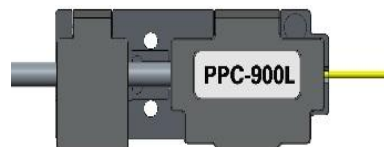
Setting

Left Only

Splicer Models

KF4A_HDC, K33A_HDC

PPC-900L Holder



Coating Diameter or Cable Type

Miniflex_standard_cable_ppc

O.D. Ø3.0 mm / Coated Dim. Ø900µm

Setting

Left Only

Splicer Models

KF4A_HDC, K33A_HDC

H7-250-10 Holder



Coating Diameter or Cable Type
Ø250µm Coating

Splicer Models
KR12A, KR12

Setting

1 Pair(Left & Right)

H7-900-10 Holder



Coating Diameter or Cable Type
Tight Buffer Ø900µm Coating

Splicer Models
KR12A, KR12

Setting

1 Pair(Left & Right)

H7-2-10 Holder



Coating Diameter or Cable Type
250µm all types (2 fibers)

Splicer Models
KR12A, KR12

Setting

1 Pair(Left & Right)

H7-4-10 Holder



Coating Diameter or Cable Type

250 μ m all types (4 fibers)

Splicer Models

KR12A, KR12

Setting

1 Pair(Left & Right)

H7-6-10 Holder



Coating Diameter or Cable Type

250 μ m all types (6 fibers)

Splicer Models

KR12A, KR12

Setting

1 Pair(Left & Right)

H7-8-10 Holder



Coating Diameter or Cable Type

250 μ m all types (8 fibers)

Splicer Models

KR12A, KR12

Setting

1 Pair(Left & Right)

H7-12-10 Holder



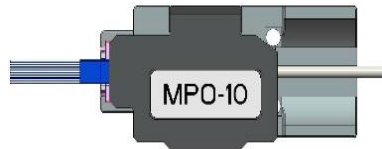
Coating Diameter or Cable Type
250 μ m all types (12 fibers)

Splicer Models
KR12A, KR12

Setting

1 Pair(Left & Right)

MPO-10 Holder



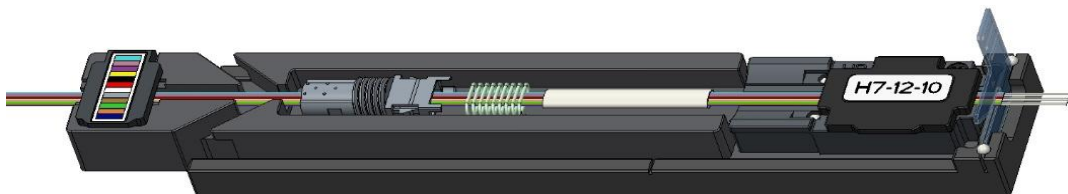
Coating Diameter or Cable Type
MPO-SOC Pre-cleaved (UCL-Swift)

Splicer Models
KR12A, KR12

Setting

Right Only

RBN12-FR-ST-KIT



All-In-One Fusion Splicer

KF4A-HDC, K33A-HDC, and KR12A

Product Description

The UCL-Swift KF4A-HDC (cladding alignment) and K33A-HDC (core alignment) splicers are designed for field installation of PSPL and CR type Hardened FSOs. These highly advanced splicers provide all 5 major fusion splicing steps in one unit.

These splicers are the best solution for Hardened Fusion Splice On Connector (HFSOC) installation in FTTH network applications. Fusion splice-on connectors eliminate potential fatal issues sometimes related to conventional mechanical splice-on connectors.

ALL-IN-ONE, 5 Functions in 1 unit



Features and Benefits

1 Fast and simple installations. All-In-One technology provides the field technician a quick, simple and reliable terminating method.

2 Excellent Reliability. No damage on the stripped fiber compared with using manual stripper.

3 High Durability. Electrode life is up to 38,000 splices and Rotating blade life is up to 75,000 fibers (optional up to 110,000 fibers).

Specification



KF4A-H D C

Premium
Active Clad Alignment



K33A-H D C

IPAAS Core Alignment



KR12A

2x Faster
Swift Ribbonizing and Splicing

Dimension (mm) 132(W)x212(L)x73(H)	Dimension (mm) 136(W)x215(L)x137(H)	Dimension (mm) 136(W)x215(L)x132(H)
Fiber Alignment Active Clad Alignment	Fiber Alignment IPAAS Core Alignment	Fiber Alignment Ribbon
Applicable Fibers SM(G.652,G.653,G.655,G.657A1,2, B2,B3,G.654E),MM(G.651)	Applicable Fibers SM(G.652,G.653,G.655, G.657A1,2,B2,B3,G.654E),MM(G.651)	Applicable Fibers SM(G.652),MM(G.651), DS(G.653),NZDS(G.655)
Fiber Count Single fiber	Fiber Count Single fiber	Fiber Count Single fiber, 2~12 Ribbon fiber
Splicing time Typical 7sec with SM	Splicing time Typical 6sec (Quick Mode)	Splicing time Typical 20sec with standard SM (ITU-TG.652)
Operating Altitude: up to 5,000m above sea level, Temp.: -10~50 degree, Humid.: 0~95%	Operating Altitude: up to 5,000m above sea level, Temp.: -10~50 degree, Humid.: 0~95%	Operating Altitude: 0~3,660m above sea level Temperature: -10°C~50°C, Humidity: 0~95%
Storage Temp.: 40~80 degree, Humid.: 0~95%	Storage Temp.: 40~80 degree, Humid.: 0~95%	Storage Temperature: -40°C ~ 80°C Humidity: 0~95%
Battery 3400mAh	Battery 6000mAh	Battery 6000mAh
Electrode life Up to 38,000 splices	Electrode life Up to 18,000 splices	Electrode life Up to 1,500 splices
Rotating blade life 75,000 fibers (Optional up to 110,000 fibers)	Rotating blade life 75,000 fibers (Optional up to 110,000 fibers)	Rotating blade life 6,200 fibers

